



Hauraki Gulf Monitoring Project

Lockdown activities

On the seashore

We are so lucky in NZ as many of us live close to the sea. Below are a few activities to do down at your local seashore, so that you can continue learning about the Hauraki Gulf.

1 Show your family how to do an Mm2 survey

- Do a Mm2 survey with your family if you have access to a local seashore.
- Check for low tide times to make sure you catch the low tide for your survey.
- Data sheets can be download from www.marine.ac.nz/resources
- Upload the data to the Mm2 web site and compare with the survey you did with the class earlier in the year. Think about similarities and/or differences.



2



Take photos of the marine species you find

- Upload your photos to [iNaturalist](https://www.inaturalist.org/) to confirm your identification.
- Identify which species are endemic, native and introduced (find out what the terms mean).
- Investigate why some marine species are called marine pests www.mm2.net.nz/resources/marine-pests

3



Create a guide for your local seashore

- Share your knowledge with people in your bubble, your class and/or the community by creating a guide or poster using your images or drawings.
- Include pointers on how to be kaitiaki / guardians for the seashore.
- How many different names can you find for the same animal / plant?

For more information, please visit:
www.mm2.net.nz





Hauraki Gulf Monitoring Project

Lockdown activities

At home

If you're not able to get out to the shore, try these at home activities to learn more about our amazing marine community. Check out the seashore videos at www.mm2.net.nz/resources/seashore-videos

1



View a Southern Seashore

Join marine educators for a seashore walk in Dunedin.

- Watch the video recording of our live rocky shore explore and then compare the Hauraki Gulf with NZ's southern seashores: www.facebook.com/NZMarineStudiesCentre/videos/999538227555280
- Learn more about the way sea stars feed: www.facebook.com/NZMarineStudiesCentre/videos/4061461527285436

2

Compare North and South Island Surveys

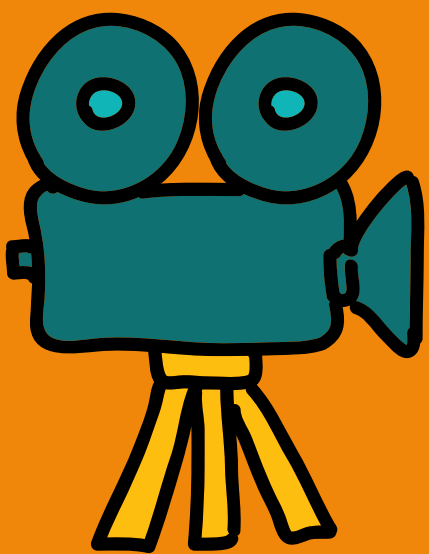
Investigate seashores and marine metre squared data around New Zealand.

- Check out the [Mm2 surveys map](#) to find out where others have done Mm2 and what they found.
- Investigate the [Mm2 species map](#) to find out where else the animals and plants that you found in your Mm2 survey live, or use [iNaturalist](#)



3

Fish Web Cams



- Check out the web cams at the NZ Marine Studies Centre [Webcams page](#) (e.g., [touch pool cam](#), [seahorse -cam](#)).
- Which animals and plants can you identify? View this short video: [touch pool session](#) for some help with identification.
- While you are viewing the touch pool cam, can you solve our murder mystery? <https://www.otago.ac.nz/marine-studies/otago729749.pdf>



For more information, please visit:
www.mm2.net.nz